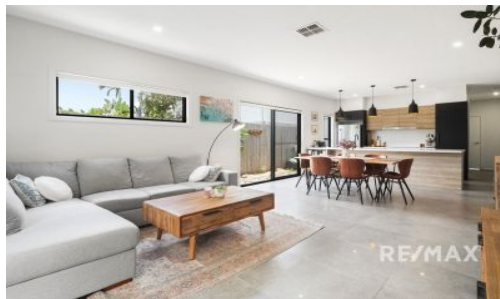


LEASED



18a Joffre Street, Coorparoo

Privacy. Luxury. Serenity. Welcome home to 18a Joffre Street, Coorparoo. This immaculate, architecturally designed townhome was constructed in late 2017. From the moment you walk through the door you realise that you are walking into something beautiful and quite unique.

Featuring modern appliances, plenty of stone, matte black tapware, feature doors, ILVE appliances and plenty of light and space, you will enjoy all that this property has to offer. Its functional design provides a seamless flow from the garage and front door through a corridor and into a large living/kitchen/dining area. With a sliding door at the rear that flows out to a covered rear and secluded patio.

...

3  2  2 

Price: LEASED

View: <https://remaxexperience.com.au/7848626>

Leasing Team

M 0435 718 695

RE/MAX Experience



FIRST FLOOR



GROUND FLOOR



18A Joffre Street **COORPAROO**

3 | 2 | 1 | 155m²

All dimensions are approximate; they are subject to errors and inaccuracies and no liability will be accepted.
Plans are shown for marketing purposes only.