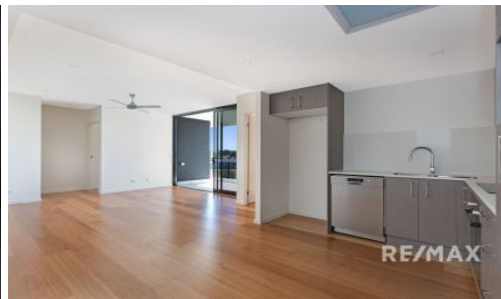
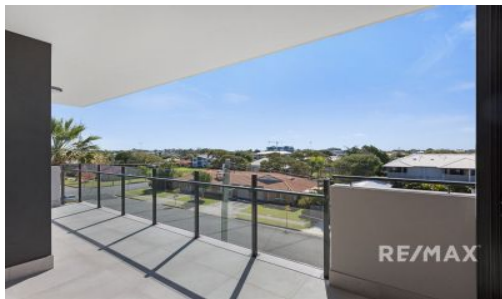


SOLD



8/51 Emsworth Street, Wynnum

Bayside Wynnum is all about lifestyle! A village atmosphere enhanced by its picturesque waterfront esplanade and a wide array of easily accessible amenities. It is a location that calls for stylish, low-maintenance living? 'Saltaire Wynnum' delivers just that!

The spacious open-plan living area flows out to an extra-large elevated patio area, great for entertaining friends and family. Large bedrooms with built-in robes, enjoy a supremely private position separate from the living spaces.

Enjoy fresh Moreton Bay breezes, timeless modern finishes, and quality European appliances. Peacefully positioned, this unit offers the ultimate lifestyle package. 'Saltaire' is within easy strolling distance of many amenities such as public transport, cafes, shops, gol...

2  2  1 

Price: \$632,000

View: <https://remaxexperience.com.au/7936218>

David Cotterill
M 0433 230 680



Garth Stevens
0467 468 744



RE/MAX Experience



Room Dimensions

Living	3.7mx4.0m	Bedroom 1	3.1mx2.9m
Kitchen/Dining	3.8mx3.9m	Ensuite	2.3mx2.9m
Balcony	7.0mx2.8m	Bedroom 2	3.3mx3.3m
		Bathroom	2.3mx2.1m

