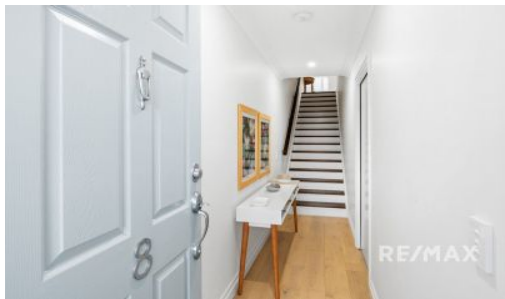


LEASED



## 8/19 Nicklin Street, Coorparoo

From the traditional gabled roof to the delicate lines of the picket fence, this stunning Hampton's inspired townhome enhances the surrounding established heritage precinct. Intricate detailing, such as the soft chintz hue of the front entry door, creates a warmth that flows throughout the property, enriching your time at home. Architecturally imagined from the outside in, this townhome brings an elegant, contemporary take on a traditional style, seamlessly complementing the surrounding established heritage precinct. Inspired by the timeless Hampton's inspired aesthetic. A stylish kitchen features stainless steel ILVE appliances, including a 75cm gas cooktop and electric oven, undermount rangehood and semi-integrated dishwasher. Fusing together the finest features of timeless profiled cabinetry in soft tones adjoining stone benchtops and feature tiled splash...

3 2 2

**Price:** LEASED

**View:** <https://remaxexperience.com.au/8108958>

**Leasing Team**

**M 0435 718 695**

RE/MAX Experience



# FINCH ROW

COOPAROO

## TOWNHOME EIGHT

### AREA SUMMARY

INTERNAL	171m <sup>2</sup>
PORCH, BALCONY	31m <sup>2</sup>
COURTYARD	21m <sup>2</sup>
<b>TOTAL</b>	<b>223m<sup>2</sup></b>



*Indicative only. Subject to Variations in accordance with the Contract Terms. See Identification Plan contained in the Disclosure Documents for areas.*  
Version 06.07.2018.



**SECOND FLOOR**



**FIRST FLOOR**



**GROUND FLOOR**